

December



2025

### Help Us Protect Trees!

*Kevin Peshick, Tree Working Group Coordinator  
Pittsfield Village Condominiums Landscape Committee  
[LandscapeCommittee@PittsfieldVillage.com](mailto:LandscapeCommittee@PittsfieldVillage.com)*

During the tree survey, our crews noticed something damaging to our trees. We found things attached to our Village Trees, including pet leashes, bird feeders, ornaments, and swings. The Resident Rules of the Village prohibit attaching anything to trees. Why, you ask? Let me tell you why.

Every scrape to the base from a pet leash, snapped twigs, bark abrasions from a bird feeder hook, or nails put into a tree to hold a bird feeder or ornament...creates an opening for fungi and pathogens to enter the tree. This damages the tree and can lead to the tree's early demise.

If you look around the Village, you will see that the Tree Survey crews have pounded hundreds of nails into our trees to attach a tag; however, we use specialty stainless steel nails that are very thin and have the highest anti-corrosion rating on the market. Then, out of an abundance of caution, we only use lightweight tack hammers to pound in these nails, so that if we miss the nail, the bark will only get a very light tap from these small hammers.

One special time of the year is the holiday season, when people like to decorate trees and shrubs. The lights are enjoyable and colorful, and we all enjoy them; however, we have a straightforward rule: Only attach holiday lights to evergreen trees and shrubs. Evergreens are green trees like "Christmas" trees, cedars, and arborvitae shrubs. Do not attach any holiday decorations to trees or shrubs that grow leaves. While the leaves are not on them this time of year, they are much easier to damage than evergreens. The Village also requires that all such decorations be removed by January 15th.

Please don't hesitate to contact the Landscape Committee if you have any questions about these rules. Thank you!



Reminder that **exterior holiday lights** must plug into an outside outlet, not plugged into an interior outlet with cords running through windows or under doors.

Thank you!



# Holiday Make & Take

## HOLIDAY CRAFT NIGHT

**Tuesday, December 16**

**6:00 pm to 8:00 pm**

Pittsfield Community Building

**RSVP [tvincen@kramertriad.com](mailto:tvincen@kramertriad.com)**

It's time again to get together to do something cool, like crafting.

Stop by for some holiday cheer, sweet cookies, and best of all, together we'll create a holiday-inspired jellyfish (or sea urchin, however it may turn out) for you to hang in your home or to give as a gift.

All Welcome!



*Please let me know you're coming so we're sure to have enough supplies.*



## ASSOCIA / KRAMER-TRIAD MANAGEMENT TEAM

Kendra Zunich, Manager: [kzunich@kramertriad.com](mailto:kzunich@kramertriad.com)  
 Wanda Buster, Bookkeeper: [wbuster@kramertriad.com](mailto:wbuster@kramertriad.com)  
 Tracy Vincent, Admin: [tvincent@kramertriad.com](mailto:tvincent@kramertriad.com)  
**General Info / Maintenance:** [office@pittsfieldvillage.com](mailto:office@pittsfieldvillage.com)

## BOARD OF DIRECTORS

2025—2026

[condoboard@pittsfieldvillage.com](mailto:condoboard@pittsfieldvillage.com)

Ellen Johnson, President

[ellen.johnson@pittsfieldvillage.com](mailto:ellen.johnson@pittsfieldvillage.com)

Jessica Lehr, Treasurer

[jessica.lehr@pittsfieldvillage.com](mailto:jessica.lehr@pittsfieldvillage.com)

John Sprentall, Member at Large

[john.sprentall@pittsfieldvillage.com](mailto:john.sprentall@pittsfieldvillage.com)

David Brassfield, Secretary

[david.brassfield@pittsfieldvillage.com](mailto:david.brassfield@pittsfieldvillage.com)

Linda Ross, VP

[linda.ross@pittsfieldvillage.com](mailto:linda.ross@pittsfieldvillage.com)

## VIOLIN & VIOLA LESSONS

For Elementary School Students to Adults!

Lessons are held at Calvary Presbyterian Church at the corner of Fernwood & Norwood. Contact Linda Speck, 734.730.4525 [aa3013@wayne.edu](mailto:aa3013@wayne.edu)

## COMMITTEE direct emails:

[landscapecommittee@pittsfieldvillage.com](mailto:landscapecommittee@pittsfieldvillage.com)  
[mm@pittsfieldvillage.com](mailto:mm@pittsfieldvillage.com)

## Pittsfield Village Office

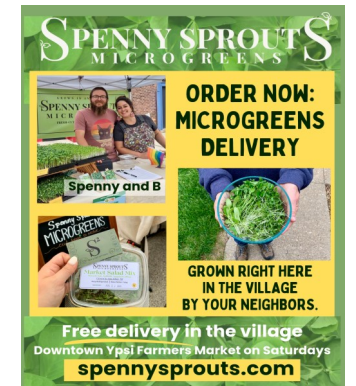
Monday— Friday, 8:30 am to 5:00 pm

734-971-0233 Fax: 734-971-3421

[www.pittsfieldvillage.com](http://www.pittsfieldvillage.com)

Call or email the office with Questions/concerns, and requests:

[office@pittsfieldvillage.com](mailto:office@pittsfieldvillage.com)



# DECEMBER 2025

Sun	Mon	Tue	Wed	Thu	Fri	Sat
	1	2 M&M Committee 6:00 pm	3 BOARD MEETING 6:00 PM	4	5	6
7	8	9 Landscape Committee 6:00 pm	10	11	12	13
14	15	16 CRAFT NIGHT	17	18	19	20
21	22	23	24	25 OFFICE CLOSED	26 OFFICE CLOSED	27
28	29	30	31 OFFICE CLOSING EARLY			