

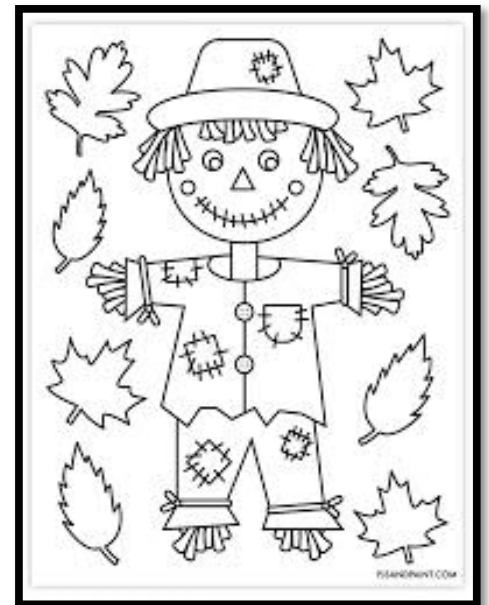
FALL MAINTENANCE CHECKLIST



- ⇒ Check smoke detector batteries
- ⇒ Check carbon monoxide detector batteries
- ⇒ Check thermostat battery
- ⇒ Disconnect garden hoses
- ⇒ Check and replace furnace filters
- ⇒ Check windows for:
 - ⇒ Broken seals
 - ⇒ Broken latch/lock/mechanisms
 - ⇒ Proper opening and closing



Call 734-971-0233 if you need assistance or guidance.
 You may also email
office@pittsfieldvillage.com



Halloween Pet Parade Fun!







"The Village and Climate Change: The Future of Our Trees"

Kyler Melmoth, Landscape Committee

Our community's resilience in the face of climate change is crucial to our quality of life and well-being. Building resilience in Pittsfield Village is important, and one way to achieve this is through a strong tree canopy that can withstand the challenges posed by climate change. We can do this by maintaining and planting a diverse number of species that will be best adapted to the changing climate ahead.

As the Tree Working Group surveys the trees here in the village, we are considering how to maintain a strong canopy well into the future. It is essential to protect our trees as they provide numerous benefits that make Pittsfield Village a great place to live and a more resilient community. By understanding which trees will thrive and which trees will struggle in a future with climate change, and understanding what trees we have in the village, we can be better prepared to protect and build our canopy for the future.

If you want to learn more about the future of our trees, check out the Huron River Watershed's Tree Resilience Toolkit, which provides great insight into what is ahead and the science behind the data.



WOW!



Look at this boulder the construction road crews unearthed here in Pittsfield Village.

You will now find it in its forever home at the corner of Pittsfield and Norwood.

Board Beat: November 2025

Submitted by David Brassfield, Member of the Board

As with the September gathering of the Board, the October 22 public meeting agenda was quite short: no expenditures to vote on, no service contracts to approve, and no resident requests to consider. Nearly all of the action came during Open Forum when we received status updates on the City infrastructure improvements project currently underway in the Village. Representatives of OHM and City Engineering made a brief presentation and answered questions. Here are highlights of their report.



Pittsfield Village Improvements Project

OHM Project Managers Cresson Slotten and Chris Elenbaas joined with City Engineer Igor Kotlyar to summarize the current state of work and expected progress through the winter and into next spring.

- ***Whitewood, Norwood, and Oakwood are Substantially Complete***
 - Landscape restoration on the north side of Norwood is in progress. Superior is doing the replanting under an agreement with Fonson, the project general contractor.
 - Paving top coat at the Oakwood/Pittsfield intersection and on the Oakwood block west of Pittsfield should be done before winter sets in. If not, the edge points will be eased so as not to interfere with snow plowing later on.
 - Sanitary sewer upgrades for the three blocks of Norwood west of Pittsfield will be carried out through the winter.



- ***Pittsfield Upgrades between Packard and Oakwood are Ongoing***

- The storm water detention basin along the Swift Creek drain is in progress.
- Underground boring for upsized storm sewer pipes is also in progress.
- Water main replacement is complete with pipes double the previous size.
- Repaving is projected for completion before winter weather sets in. There is a possibility that only the base layer will be put down, and the top layer delayed until spring.

- ***Parkwood and Jeanne Storm Sewer Upgrades Will Proceed During Winter and into Spring***

- The larger pipes will be installed with a minimum of excavation, primarily through underground boring.
- The storm water detention basin work across from Redbud Park is also slated for winter and early spring.

(Continued on Next Page)

- *Pittsfield from Edgewood to Parkwood is Slated for Spring*
- *Pittsfield from Parkwood to Washtenaw, All of Richard and Carolyn, and the Village Blocks Along Fernwood and Edgewood Are Scheduled for Next Summer and Fall*

OSI and Village “Sustainability” Collaborations

As reported at the October meeting, two initiatives are currently in the works:

- ***Village-Wide Information Door-to-Door Visits and General Information Meeting***
 - OSI Americorps volunteers will be distributing flyers and knocking on doors to get the word out about the formal collaboration recently entered into between OSI and the Village.
 - A community meeting will be held sometime in November or December to provide even more information.
- ***Weatherization and Energy Savings Upgrade Subsidies***
 - The planned survey of Village residents to determine whether we may qualify for energy conservation subsidies under a joint DTE and City program for lower-income multi-unit communities is still under development.
 - The storm water detention basin work across from Redbud Park is also slated for winter and early spring.

Website “Sustainability” Section

The Website changes described in the October “Board Beat” have now gone live. Take a look at the Village website: <http://pittsfieldvillage.com/sustainability/index.php>.

Home General Information Events Calendar Condominium Governance Forms Specifications **Sustainability**

Pittsfield Village 2220 Pittsfield Blvd. | Ann Arbor, MI 48104 | 734-971-0233 | office@pittsfieldvillage.com

Sustainability and Water Management Statement
Pittsfield Village and OSI (A2Zero) Collaboration
What Can I Do?

Sustainability

Pittsfield Village is committed to building a resilient community that prioritizes the health, safety, and long-term viability of all residents. We face real challenges—localized flooding, aging

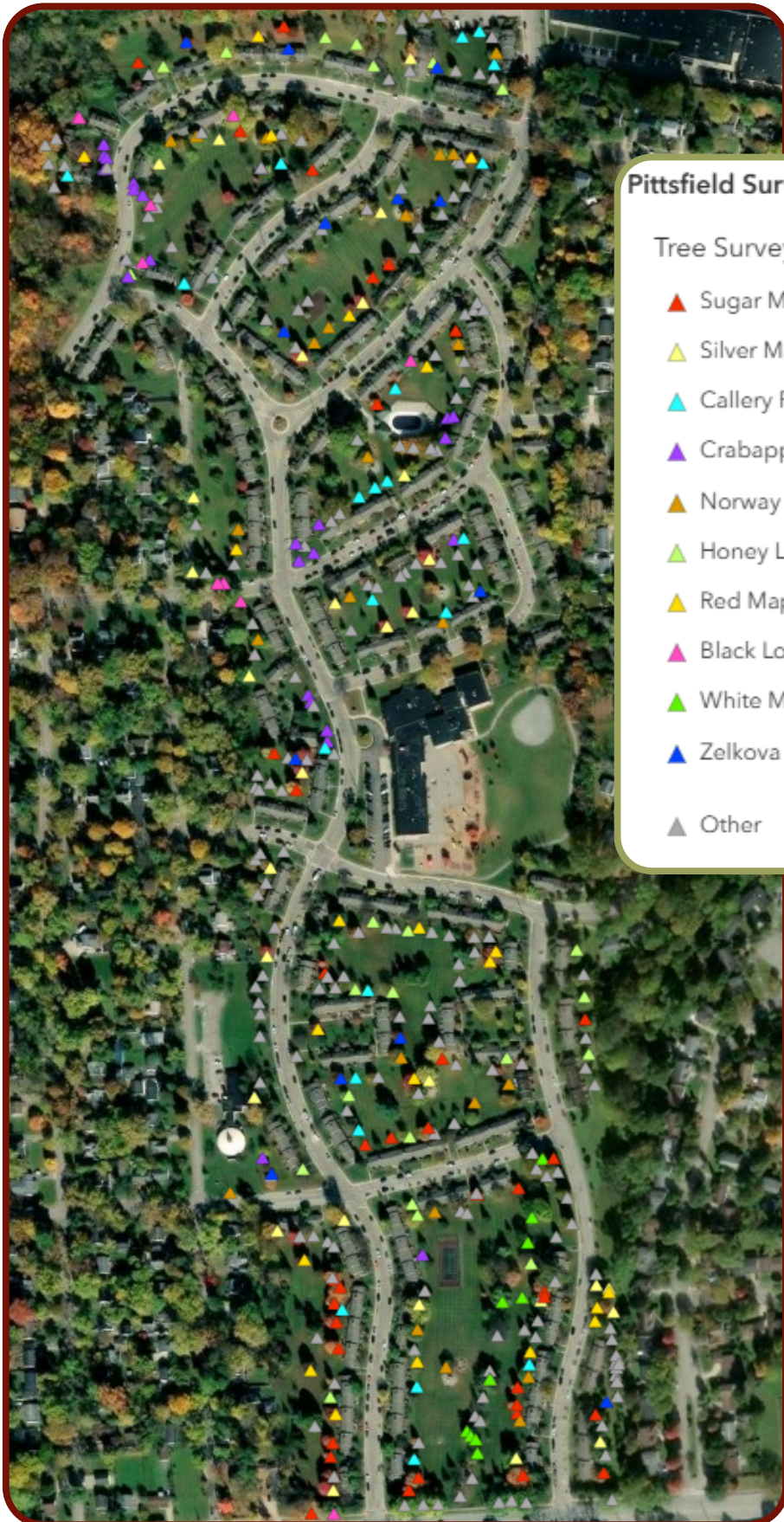
Next Board Meeting: Wednesday, December 3, 6:00 pm, at the Village Office or remotely online. All residents are welcome to attend. Note: on account of the holidays, this gathering will serve as a combined meeting for both November and a December.



Committee News

The ***Landscape Committee*** crew conducting the Village-Wide Tree Survey has been making great progress this fall. Take a gander at the wonderful map on the following page. Note: this is still work in progress. Many more trees have yet to be identified and measured. Check out Kyler Molmoth’s article elsewhere in this Newsletter issue, and don’t hesitate to chat with members of the crew when they visit your front and back yards.

Pittsfield Village Tree Survey



Pittsfield Survey

Tree Survey

- ▲ Sugar Maple
- ▲ Silver Maple
- ▲ Callery Pear
- ▲ Crabapple
- ▲ Norway Maple
- ▲ Honey Locust
- ▲ Red Maple
- ▲ Black Locust
- ▲ White Mulberry
- ▲ Zelkova
- ▲ Other

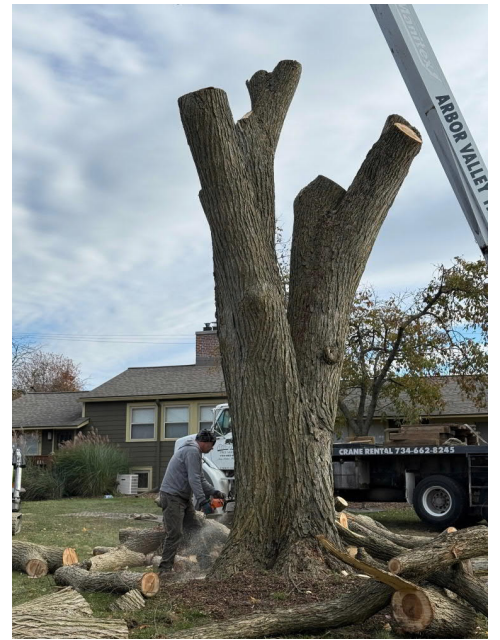


More Info





It's
bittersweet
to see a big
beautiful
tree coming
down.



Goodbye,
Mr. Elm!





ASSOCIA / KRAMER-TRIAD

Kendra Zunich, Manager:

kzunich@kramertriad.com

Wanda Buster, Bookkeeper:

wbuster@kramertriad.com

Tracy Vincent, Admin:

tvincent@kramertriad.com

General Info / Maintenance:

office@pittsfieldvillage.com



BOARD OF DIRECTORS

2025—2026

condoboard@pittsfieldvillage.com

Ellen Johnson, President

ellen.johnson@pittsfieldvillage.com

Jessica Lehr, Treasurer

jessica.lehr@pittsfieldvillage.com

John Sprentall, Member at Large

john.sprentall@pittsfieldvillage.com

David Brassfield, Secretary

david.brassfield@pittsfieldvillage.com

Linda Ross, VP

linda.ross@pittsfieldvillage.com



COMMITTEE direct emails:

landscapecommittee@pittsfieldvillage.com

mm@pittsfieldvillage.com

Pittsfield Village Office

Monday— Friday, 8:30 am to 5:00 pm

734-971-0233 Fax: 734-971-3421

www.pittsfieldvillage.com

Call or email the office with **Questions/concerns,**
and requests:

office@pittsfieldvillage.com



NOVEMBER 2025

Sun	Mon	Tue	Wed	Thu	Fri	Sat
						1
2	3	4 M&M Committee 6:00 pm	5	6	7	8
9	10	11 Landscape Committee 6:00 pm	12	13	14	15
16	17	18	19	20	21	22
23	24	25	26	27 OFFICE CLOSED	28 OFFICE CLOSED	29
30						

xfinity mobile

EXISTING XFINITY INTERNET CUSTOMERS

Try Xfinity Mobile for a year!

Get an Unlimited 5G mobile line INCLUDED
with 300 Mbps internet and faster



Contact me to learn more about this exclusive offer.

Fatima Ali
734-899-7991
fatima_khan@comcast.com

Comcast may have the right to exclusively market certain services to residents. We are not an exclusive provider of any services and services from other providers may be available.

Restrictions apply. Not available in all areas. Offer ends 12/16/25. New Xfinity Mobile customers only. Requires residential post-pay 300 Mbps internet or higher. Limited to one Unlimited line for 12 months. After 12 months, or if internet service is canceled or downgraded, regular mobile rates apply. Requires 24-month Xfinity Mobile Device Payment Plan Agreement ("Device Agreement"), and activation of new Xfinity Mobile line and transfer of phone number from another carrier within 30 days of phone purchase date. Device credits applied monthly to your account over 24 months so long as Device Agreement is in effect. If line is canceled, voluntarily or involuntarily or device payments are accelerated, balance of credits associated with device payment are forfeited. Offer not valid with prior purchases, returns or exchanges. May not be combined with other offers. Xfinity Mobile requires residential post-pay Xfinity Internet. Line limitations may apply. Equip., intl. and roaming charges, taxes and fees, including reg. recovery fees, and other charges extra, and subj. to change. \$25/mo. charge applies if Xfinity TV, Internet or Voice post-pay services not maintained. Pricing subject to change. During times of network congestion, your cellular data speeds may be slower temporarily. After monthly data use threshold for a line is exceeded, speeds are reduced until the billing cycle ends. A minimum \$20.00 charge applies per month, per account for By the Gig lines, regardless of data usage. Charges apply to each GB or partial GB of shared data. No rollover data. For Xfinity Mobile Broadband Disclosures visit: www.xfinity.com/mobile/policies/broadband-disclosures. © 2025 Comcast. All rights reserved.



Xfinity thanks you for your service

We proudly offer exclusive benefits for service members and veterans. Don't miss out!



Get an
unlimited mobile line
included with your
Xfinity Internet
for **2 years**



Enjoy NOW TV
included for 1 year
Featuring 125+ live and
On Demand TV channels plus
Peacock Premium included
at no extra cost



Xfinity Rewards
Diamond
tier status

When you verify your military status.

Shana Riley
734-536-5114
Reshyna_Riley@comcast.com

Comcast may have the right to exclusively market certain services to residents. We are not an exclusive provider of any services and services from other providers may be available.

Ends 12/21/25. Available to residents with (a) Xfinity Bulk Internet or (b) Xfinity Bulk TV who subscribe to individually billed post-pay Xfinity Internet service. Xfinity Mobile customers with unlimited data line only. Must verify U.S. military status at xfinity.com/military. Limited to value of one, new unlimited line, applied via 24 monthly bill credits. After 24 months, or if at least one unlimited data line is not maintained, discount will be removed. Limit one discount per account. Equip., intl. and roaming charges, taxes and fees, including reg. recovery fees, and other charges extra, and subj. to change. **Xfinity Rewards Diamond Tier Status:** Upgrade to Diamond Tier Status will occur within approximately two weeks of verifying military status. To be eligible to enroll in the Xfinity Rewards Program you must be a current Xfinity post-pay TV or Internet, or Wireline Voice residential customer with a current and active Xfinity account in good-standing. Comcast employees who receive Xfinity courtesy services are not eligible to participate in the Program with respect to the address at which they receive Xfinity courtesy services. Customers who only receive Xfinity services through bulk or similar accounts, agreements, or arrangements through which services are paid by a third party, are not eligible to participate in the Program unless such customers have established individually billed accounts and are purchasing a required service(s) under that account. Visit Xfinity.com/rewards for more information. **NOW TV:** Offer limited to Xfinity post-paid Internet customers who verify U.S. military status at xfinity.com/military. After 12 months, regular rates apply (currently \$20/mo, taxes extra). NOW TV is an Internet delivered service that requires Xfinity Internet and will count against any Xfinity data plan, if applicable. It does not require a TV box. Programming subject to change.

© 2025 Comcast. All rights reserved.

xfinity