



Pittsfield Village

GREEN SPACES • GREAT NEIGHBORS

February 2018

In This Issue

- Pittsfield Village Calendar—last page
- **Valentine Party**
- CHILI COOK-OFF! 
- Board of Directors
- Find the Groundhog!?

THE CHILI COOK-OFF IS UPON US!

Attention all Village Residents!

Our Second Annual Chili Cook-Off will be held

Saturday, February 24th from 1:00-3:00 PM,

We need Judges for the tasting. Please bring your appetite and a friend. The event is being held in the back garage at the Village Office again this year, just off the driveway. There will be plenty of signs for direction. This is a FREE event and a ton of fun. We had a blast last year with John Sprentell winning with his Chocolate Chili. Really, John?! LOL

The big day is almost here. Talk about a warm winter, talk about bad storms, talk about climate change!

The one who knows is here! He has the all empowering knowledge to foretell the weather future. Does Congress know this? What about the GOP? How about the White House? I know, Trump must be aware. This is not fake news! This is the real deal since 1887.

Of course, this all goes back to the Germans. They seem to invent everything! Remember the pickle ornament on your Christmas tree? It all began with the Catholic tradition of Candlemas Day when priests would bless all the candles needed in church for the year.



If a badger was seen casting his shadow, they predicted 6 more weeks of winter.

On this side of the pond, we have our beloved groundhog, also known as a woodchuck. Yes, it is almost GROUND-HOG DAY!

...Continued on pg. 2



This year there will be different chilies, and hopefully extra chefs. Yummy is the word for this event. Come hungry and ready for a good time.

Bring a deck of cards with your appetite if you like .

Watch out John, you've got competition!

We'll see you and your crockpots on the 24th!

Get ready to take a dip in the pool or go skiing. It all depends on the cute little furry guy.

He is presently waiting patiently in The Village, being cradled in someone's arms. Your job is to find him.

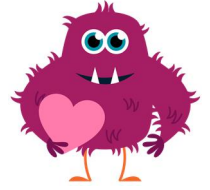
Have fun!

Happy
Groundhog Day!



LET'S GET CREATIVE! Last year we had a lot of fun designing our own **valentines** and **cards** for our friends and loved ones.

My valentine sure loved my creation, and yours will, too!

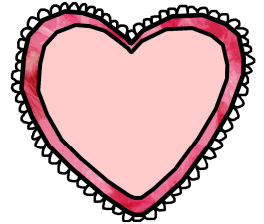
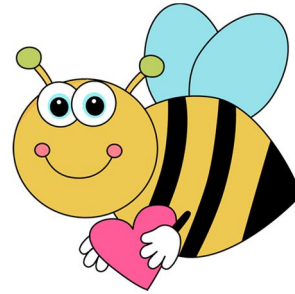


Join us at the Community building on

Thursday, February 8th at 5:00pm.

We'll have **sweets** and **Pink Panther punch** — so stop by and get your glitter on!

Hope to see you!



Pittsfield Village Office Hours:

Monday— Friday, 8:30 am to 5:00 pm

Office: 734-971-0233 Fax: 734-971-3421

Email: office@pittsfieldvillage.com

Website: www.pittsfieldvillage.com

ASSOCIA / KRAMER-TRIAD

Tomas Cottrell, Manager: tcottrell@kramertriad.com

Wanda Buster, Bookkeeper: wbuster@kramertriad.com

Tracy Vincent, Admin: tvincent@kramertriad.com

Colin Breed, Maint. Supervisor: office@pittsfieldvillage.com

Pittsfield Village Management & Government

COMMITTEES

Maintenance & Modification: Leif Millar—*Meets the 1st Tuesday*

Landscape: Brian Rice — *Meets the 2nd Tuesday*

BOARD OF DIRECTORS

Meets the last Wednesday of the month

Sarah Deflon

sarah.deflon@pittsfieldvillage.com

John Sprentall

john.sprentall@pittsfieldvillage.com

Ellen Johnson

ellen.johnson@pittsfieldvillage.com

Aaron Pressel

Aaron.pressel@pittsfieldvillage.com

Jessica Lehr

jessica.lehr@pittsfieldvillage.com

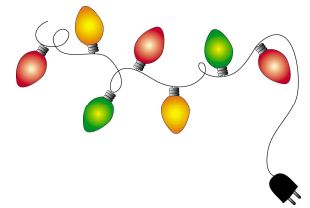
IT'S STILL COLD—SO PLEASE
PLAN AHEAD



If you leave town for any extended period of time, DO NOT turn off the water without first contacting maintenance (this does not only apply to the winter months!)

Also, leave your thermostat set at no less than 65 degrees, and open your kitchen cabinet doors (upper and lower) to keep pipes warm. Consider also, during the extreme frigid temperatures, letting the faucets drip to avoid freezing.

Holiday decorations should be taken down NO LATER THAN February 5th. Thank you for your cooperation and compliance.



Sun	Mon	Tue	Wed	Thu	Fri	Sat
				1	2 <i>Groundhog</i>	3
4	5	6 6 pm: open forum; 6:15 pm: M&M Committee	7	8 5:00 pm: Valentine Craft Event	9	10
11	12	13 6 pm: open forum; 6:15 pm: Ldsp Committee	14	15	16 Chinese New Year!	17
18	19 Presidents day <i>NO MAIL</i>	20	21	22	23	24 1:00 to 3:00 pm: 2ND ANNUAL CHILI COOK-OFF!
25	26	27	28 6:15 pm: open forum; 6:30 pm: Board Mtg	Look for Garden Marker Information soon!		